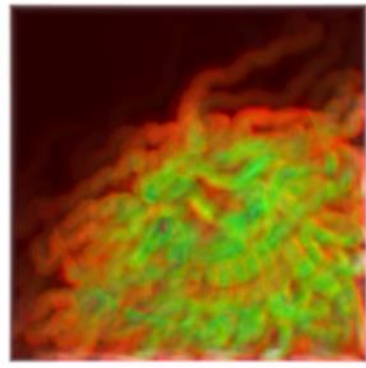
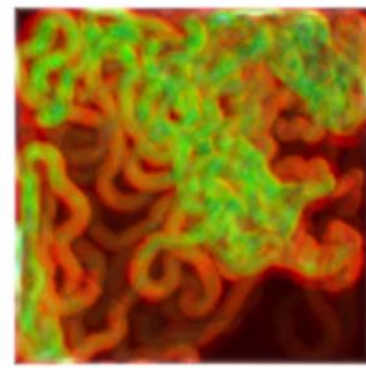
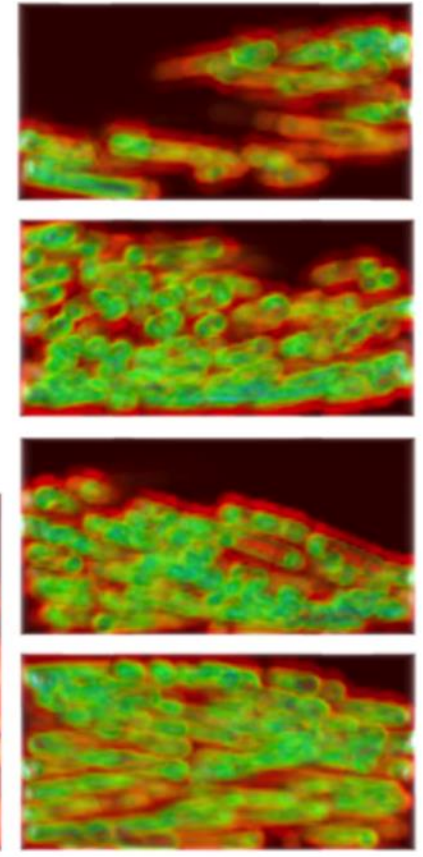
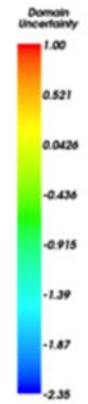
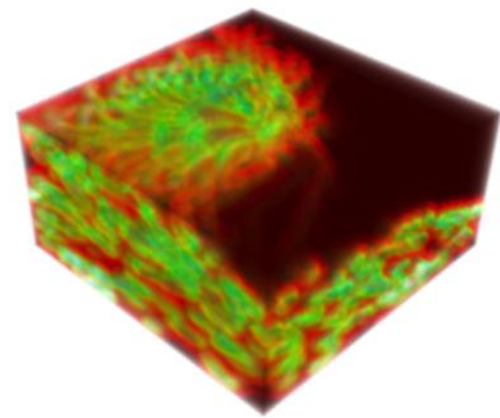
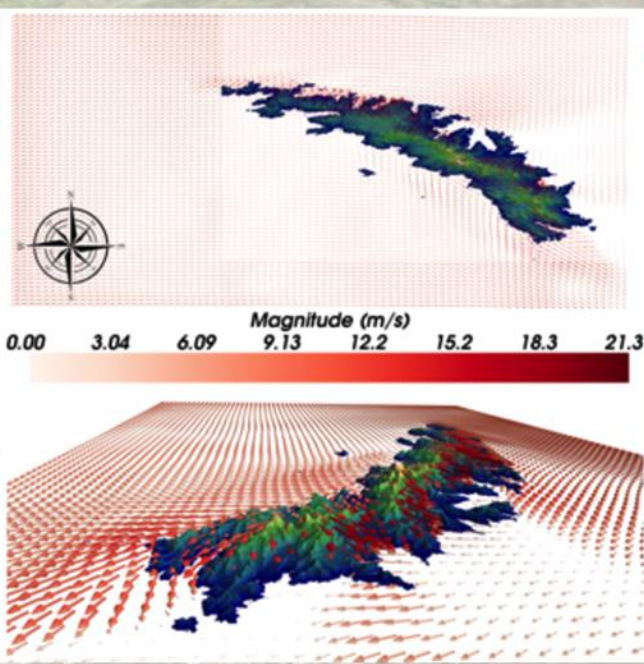
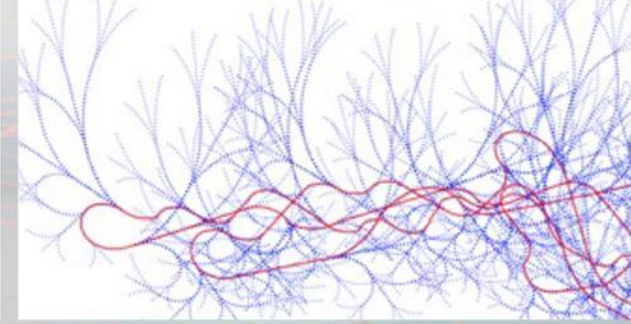
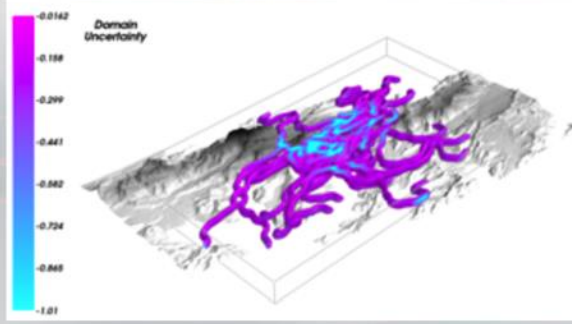
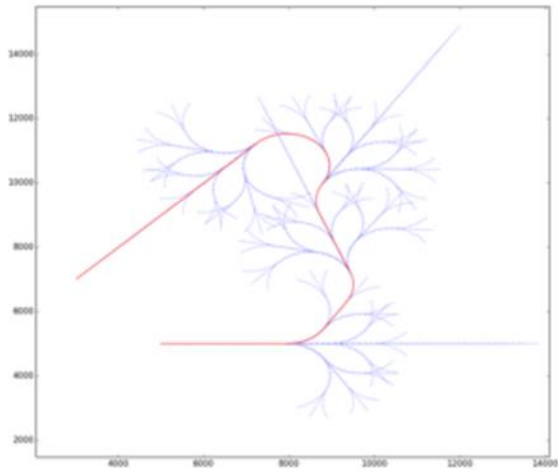
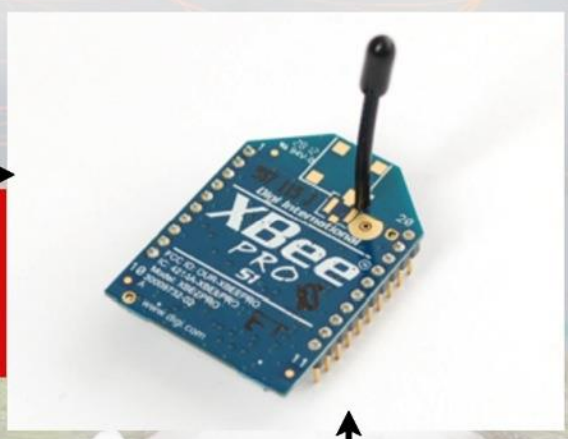
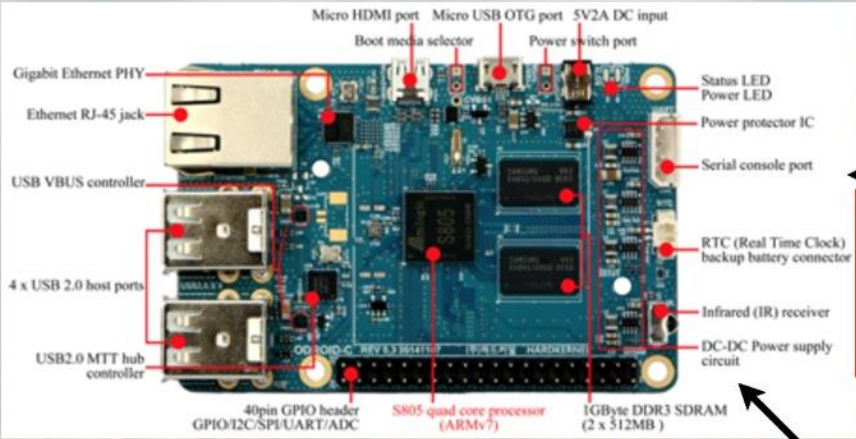
A 3D rendered landscape featuring a mountain range with snow-capped peaks and green valleys. A path of red dots is overlaid on the terrain, starting from the left and moving across the mountains. The sky is dark blue with orange and red streaks, suggesting a sunset or sunrise. The overall scene is a digital simulation of a natural environment.

An intelligent, heuristic path planner for multiple agent unmanned air systems

C. Crispin, A. Sóbester

ciclell@soton.ac.uk, a.sobester@soton.ac.uk





Waypoints to and from wireless comms

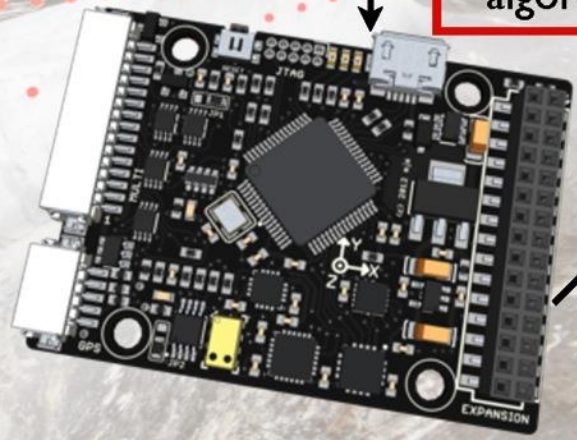
Waypoints to Autopilot

GPS and attitude feeds back to algorithm

FDM Simulates flight

Other Aircraft

JSBSim



Send controls to FDM

Visualise with Flightgear

